



MOVE INTO AN

EXTRA ORDINARY *Lifestyle*

POWERED BY
SMART LINE MARKETING (PVT) LTD



**SEETLA
TOWER**
— FAISAL HILLS —





MISSION STATEMENT

Smart Line Marketing (pvt) Ltd has been created with a view to provide modern living and commerce opportunities to its customers. We aim to play our part in the GDP growth of the country through construction and real estate development. Thus helping several industries and creating job opportunities for unskilled and semil skilled workers. We sincerely hope that the people investing in our projects will reap many benefits in terms of economic gains by housing and commerce.

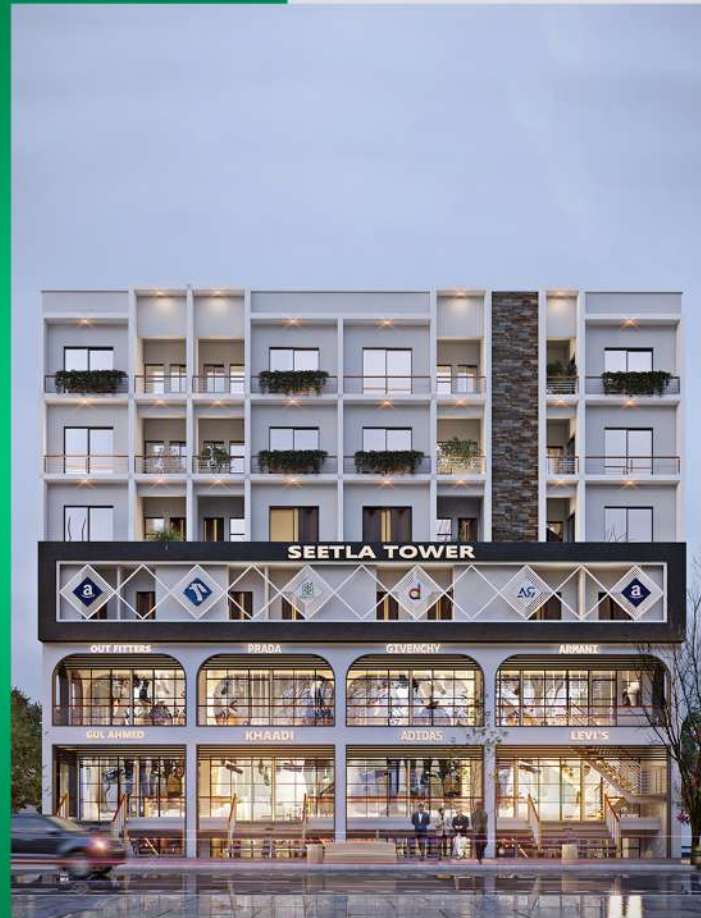
Umair Sutlan Joiya
CEO Smart Line Marketing (pvt) Ltd

Ch. Abdul Majeed OWNER OF FAISAL HILLS

Chairman Faisal Town the man who completely reshaped the real estate sector of Pakistan. With his diversified experience spread over three decades Ch. Abdul Majeed single handedly transformed the real estate business in the capital city by dedication and deliverance of his commitments. Above all Ch. Abdul Majeed shared his success with hundreds of businessmen around him working along under his visionary leadership and guidance and motivated their lives with his patronage.

FEATURES

- ✓ Earthquake Resistant Structure
- ✓ Wide Car Parking
- ✓ Stylish Work in Kitchen
- ✓ Wide Stairs & Modern Lifts
- ✓ 24 Hours Security
- ✓ Concealed Electric Fittings
- ✓ Quality Tiles & Marble Flooring
- ✓ Quality Sanitary Fittings
- ✓ Shopping Area
- ✓ Stylish Ward-Robes

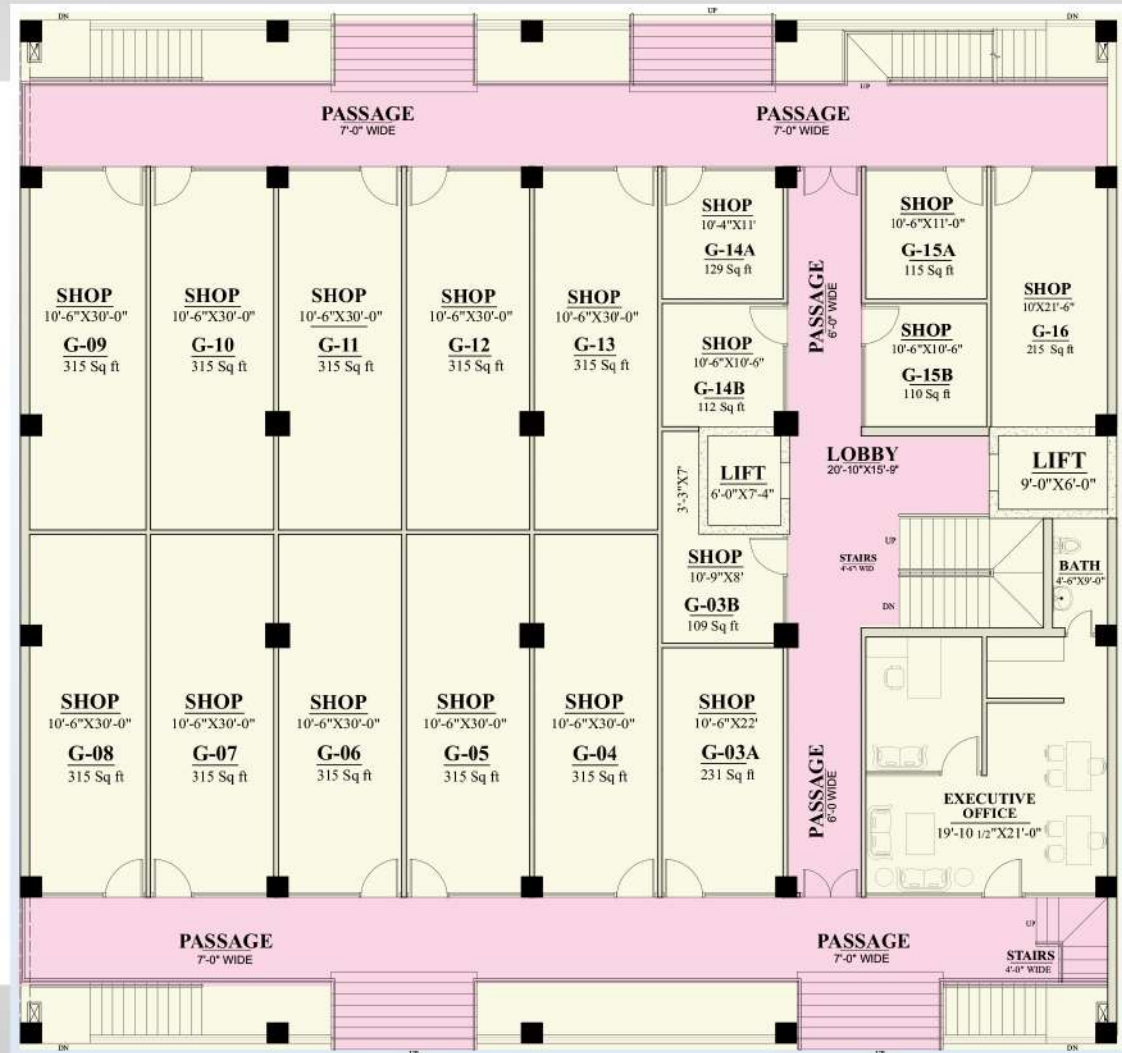


Update: 9 December, 2023



GROUND FLOOR 17 SHOPS

- 107 sq.ft - 01 Shop
- 110 sq.ft - 01 Shop
- 112 sq.ft - 01 Shop
- 115 sq.ft - 01 Shop
- 129 sq.ft - 01 Shop
- 215 sq.ft - 01 Shop
- 231 sq.ft - 01 Shop
- 315 sq.ft - 10 Shops



GROUND FLOOR PLAN



LOWER GROUND FLOOR 21 SHOPS

105 sq.ft - 03 Shops

110 sq.ft - 01 Shop

112 sq.ft - 01 Shop

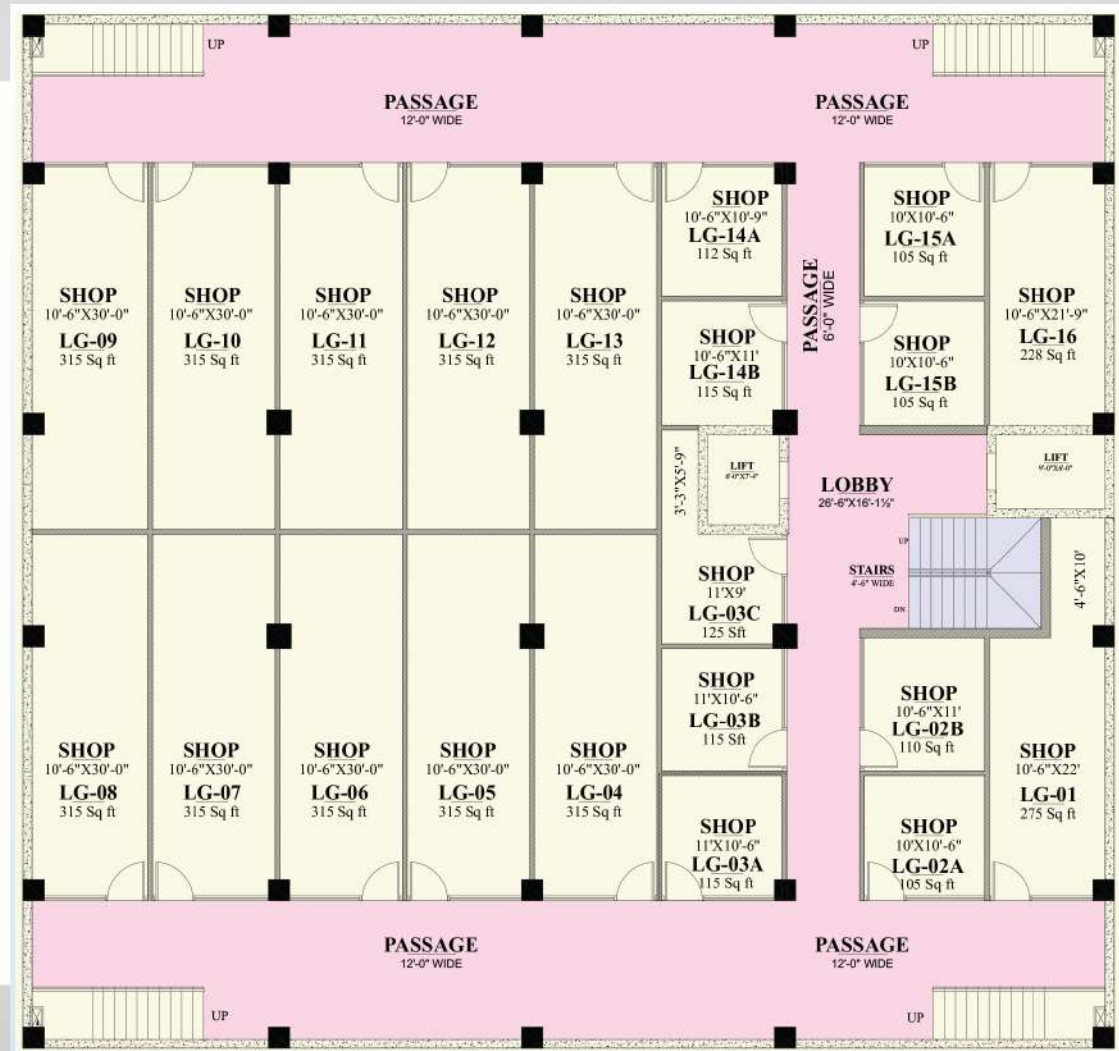
115 sq.ft - 03 Shops

125 sq.ft - 01 Shop

228 sq.ft - 01 Shop

275 sq.ft - 01 Shop

315 sq.ft - 10 Shops



LOWER GROUND FLOOR PLAN

FIRST FLOOR 20 SHOPS

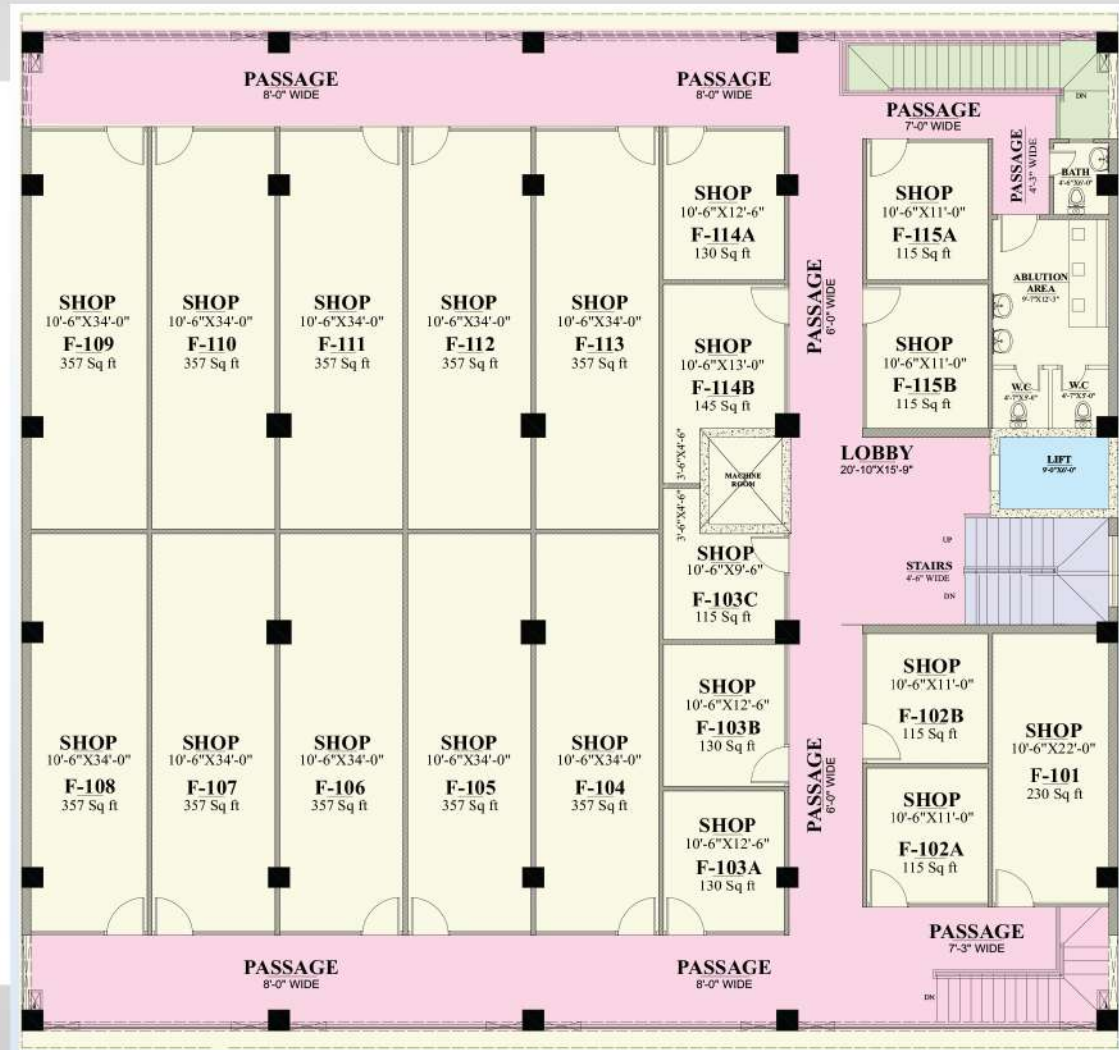
115 sq.ft - 05 Shops

130 sq.ft - 03 Shop

145 sq.ft - 01 Shop

230 sq.ft - 01 Shops

357 sq.ft - 10 Shop



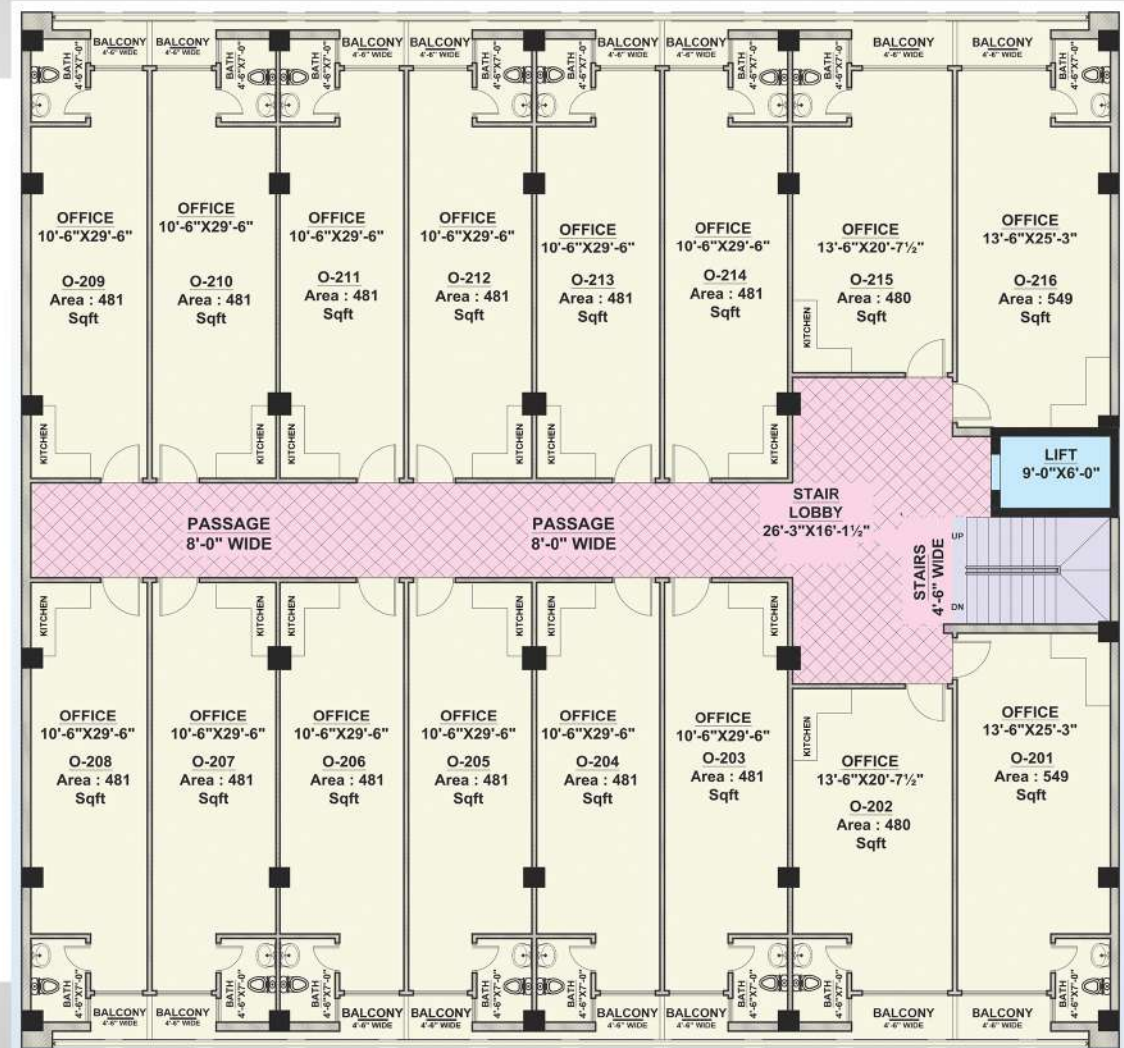
FIRST FLOOR PLAN

2nd FLOOR 16 STUDIOS / OFFICES

480 sq.ft - 02 Offices

481 sq.ft - 12 Offices

549 sq.ft - 02 Offices



SECOND FLOOR PLAN



3rd - 5th FLOOR 2 BED APARTMENTS

A1
921 sq.ft

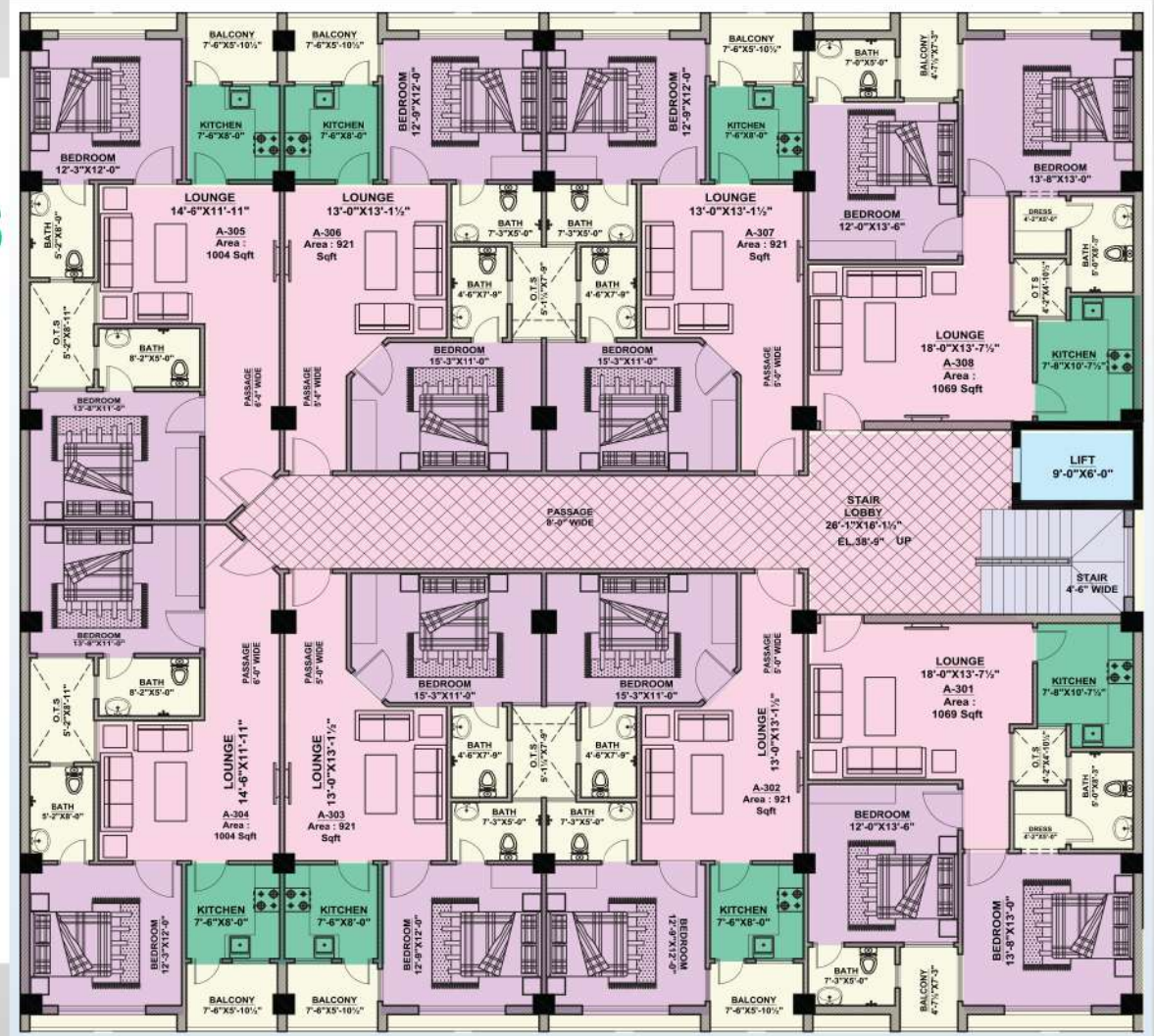
4 - No's

A2
1004 sq.ft

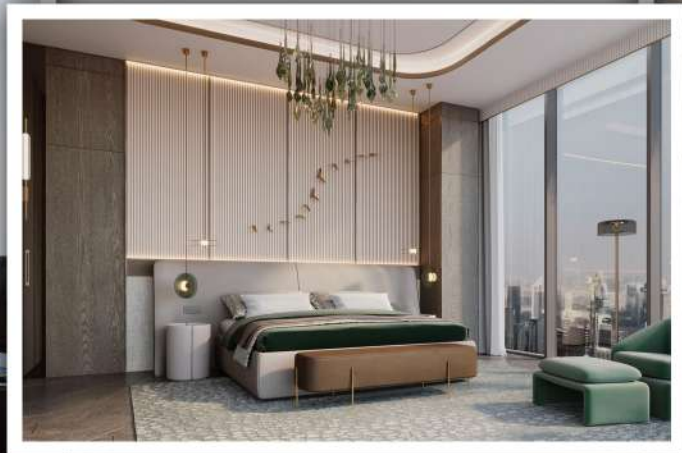
2 - No's

A3
1069 sq.ft

2 - No's



3rd - 5th FLOOR PLAN



Apartment Type

A1

921 sq.ft

2 BEDROOM APARTMENT

GROSS AREA = 921 sq.ft



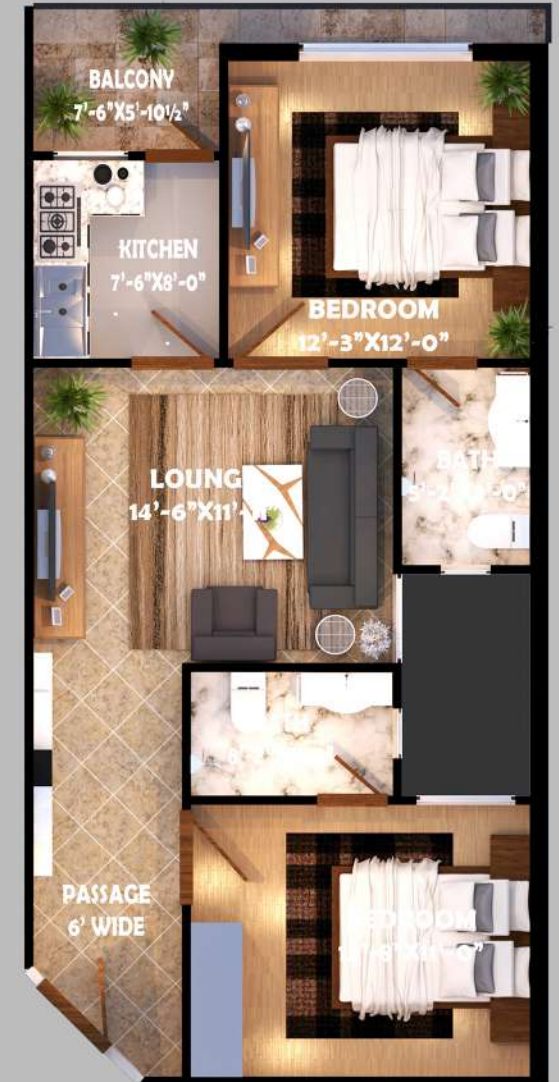
Apartment Type

A2

1004 sq.ft

2 BEDROOM APARTMENT

GROSS AREA = 1004 sq.ft



OTS

Apartment Type

A3
1069 sq.ft

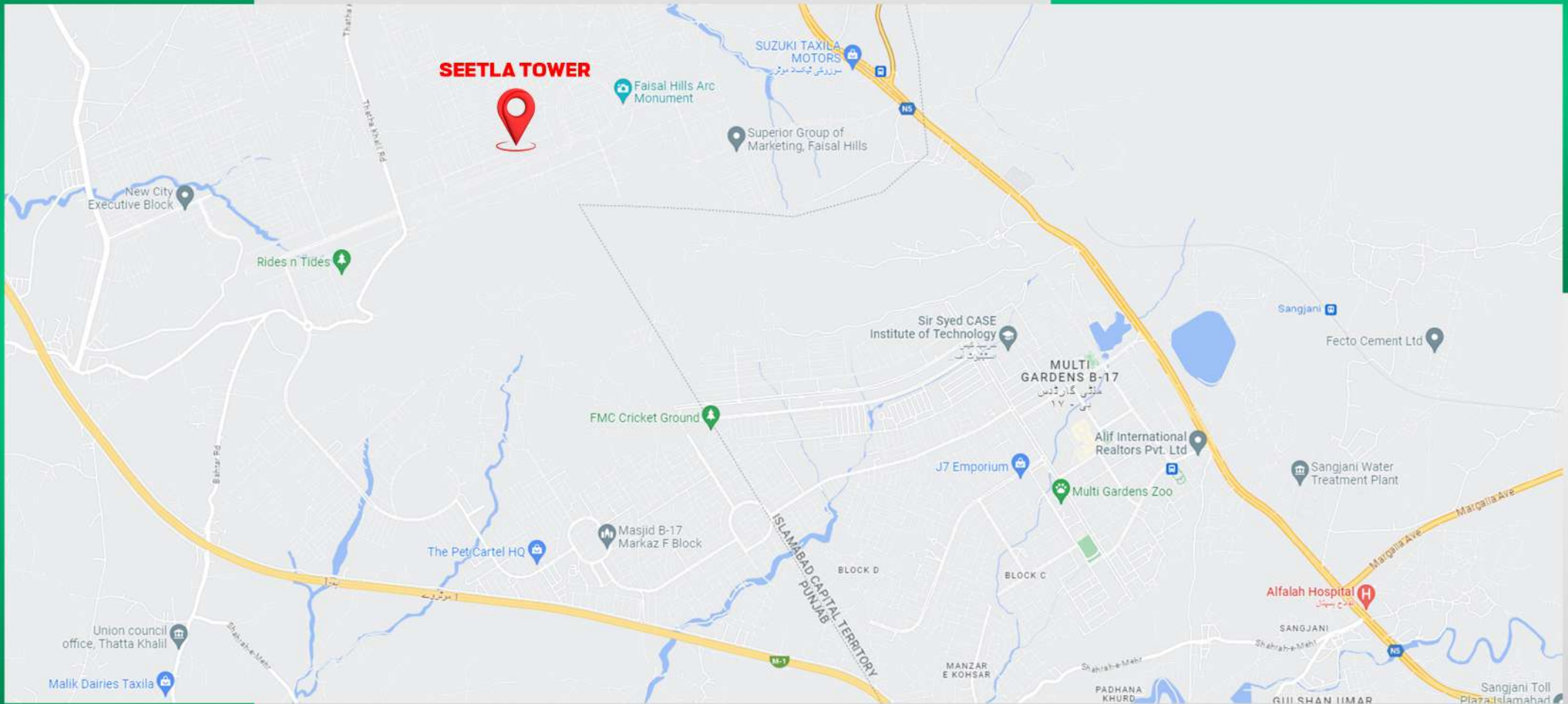
2 BEDROOM APARTMENT

GROSS AREA = 1069 sq.ft



LOCATION MAP

Plot No. 54, Block-B, Faisal Hills,
Main GT Road(N-5), Taxila





SEETLA TOWER

— FAISAL HILLS —

FOR INFORMATION & BOOKING

+92 321 581 9581

+92 51 45 000 95

Office No.102, Main Double Road, Executive Block, Faisal Hills, Taxila